

**For Immediate  
Release:**  
**February 11, 2011**

**CONTACT:**

**Greg Hollman**  
MLS President  
(520) 577-7433

**Wes Wiggins**  
Vice President, MLS  
(520) 382-8792

**Philip Tedesco, RCE, CAE**  
CEO, TAR & MLS  
(520) 327-4218

# **Tucson Association of REALTORS®**

## *Multiple Listing Service*

### **Monthly Statistics**

#### **2010 YEAR END**

Dear MLS Members:

With 2010 now just a memory, it is time to take a look back and review the Year End Statistics.

In 2010 we experienced a market filled with both challenges and opportunities. It was a year with a learning curve that required agents to have knowledge of Short Sale and Foreclosure processes, new loan and financial rules and guidelines, new Good Faith Estimate, and our new FLEXMLS software.

In brief, as you review the reports, you will notice that we saw a decline in Total Sales Volume, but a slight increase in Total Sales Units. The total number of listings significantly increased over 2009, with a moderate decrease in Average List Price. Average Days on Market (DOM) rose slightly and our Average Sale Price was down. The list to sale price ratio remained almost unchanged.

Our Year End review provides a lot of detailed information and we encourage you to take the time to review the statistics contained in this report. We believe it will provide you with a great understanding of our marketplace and act as a valuable tool and resource that you can use when educating your clients.

As we look toward a successful 2011, please join me in thanking 2010 MLS President Dan Santa Maria and the entire MLS staff for their dedicated service. We are fortunate to have such hard working and highly qualified people on our team.

We look forward to 2011, our ever changing market and the valued service we can provide the public as a Realtor®.

Here is to a healthy and prosperous 2011!

Greg Hollman  
2011 MLS President



**Lifestyle Opportunities:**  
**No matter what area or type of home  
you are interested in, you have a  
variety of options.**

**Financial:**  
**Multiple financing opportunities are  
available**  
**Talk to a REALTOR®!**  
**With the complexity of a real estate  
transaction, you need a REALTOR®.**



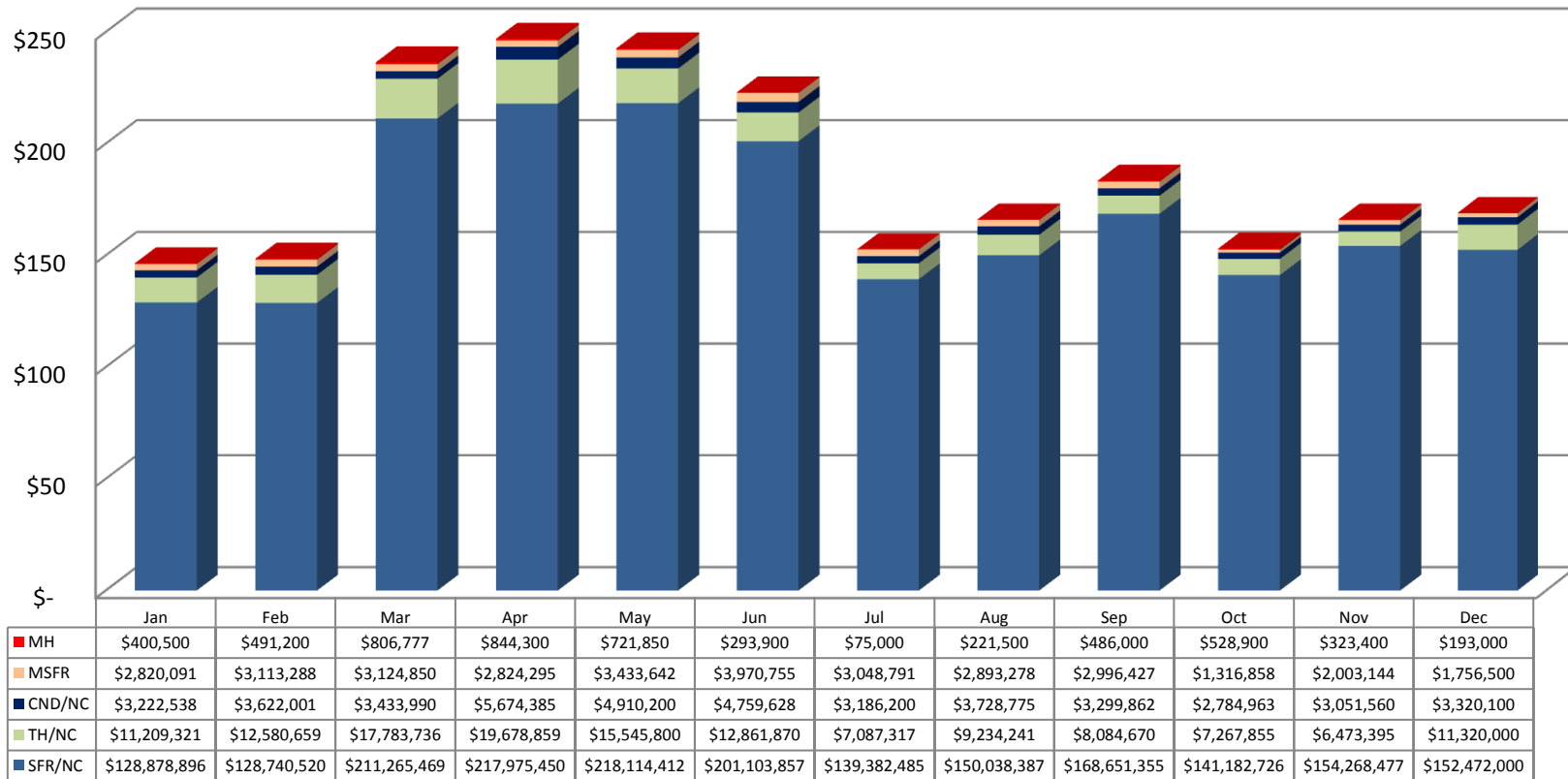
*The Tucson Multiple Listing Service, Inc. is a wholly owned subsidiary of the Tucson Association of REALTORS®, dedicated to providing a reliable real estate database for members and the public. The Association represents the interests of 5,400 professionals in the real estate industry, and is affiliated with the National Association of REALTORS®. REALTOR® is a registered collective membership mark which may only be used by professionals who are members and subscribe to its strict code of ethics.*

# 2010 MLS Year in Review Summary

	2000	2001	2002	2003	2004	2005	2006	2007	2008	2009	2010
<b>Total Sales Volume</b>	\$ 1,718,225,226	\$ 1,939,990,077	\$ 2,232,461,481	\$ 2,573,924,021	\$ 3,427,229,140	\$ 4,613,211,685	\$ 4,247,270,446	\$ 3,522,942,997	\$ 2,560,571,338	\$2,345,672,056	2,234,884,205
<b>Total Sales Units</b>	10,988	12,076	13,135	14,351	16,557	18,003	15,726	12,939	10,578	11,661	11,802
<b>Total Units Listed</b>	17,227	18,908	20,564	21,201	20,998	25,080	33,992	33,022	26,592	22,170	31,914
<b>Average List Price</b>	\$160,442	\$164,854	\$174,395	\$183,604	\$211,159	\$258,941	\$277,904	\$284,014	\$254,247	\$211,524	\$199,197
<b>Average Sale Price</b>	\$156,373	\$160,648	\$169,963	\$179,355	\$206,996	\$256,247	\$270,080	\$272,273	\$242,066	\$201,155	\$189,352
<b>Average DOM /CDOM</b>	53 / 70	48 / 69	51 / 68	58 / 75	54 / 75	31 / 39	49 / 69	67 / 104	78 / 123	78/113	88/121
<b>Average % of LP received on Sales</b>	97.46%	97.45%	97.46%	97.69%	98.03%	98.96%	97.18%	95.87%	95.21%	95.10%	94.59%

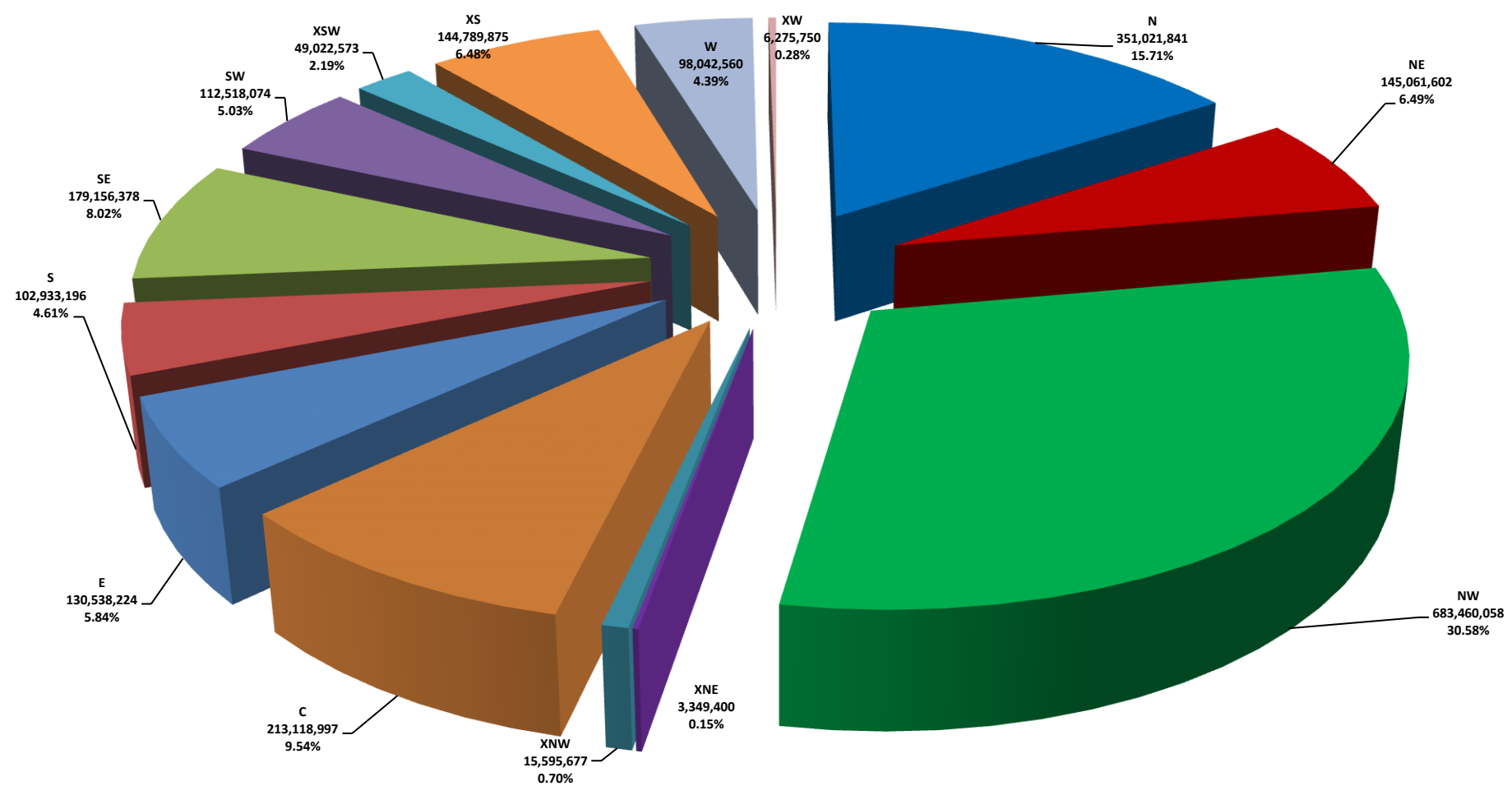
Please note: The data contained in this report is dynamic in nature and therefore subject to change and adjust with the passage of time. These figures and charts are an approximation of the flow of business as observed through the Tucson Association of REALTORS® Multiple Listing Service. This report does not represent all real estate activity in the area as it does not include unrepresented sales, commercial sales or a substantial portion of new home sales. Though the data and materials presented here are deemed to be substantially correct, neither the Tucson Association of REALTORS® nor the MLS guarantees nor is in any way responsible for its accuracy.

## 2010 All Residential Total Sales Volume by Month and Type



Please note: The data contained in this report is dynamic in nature and therefore subject to change and adjust with the passage of time. These figures and charts are an approximation of the flow of business as observed through the Tucson Association of REALTORS® Multiple Listing Service. This report does not represent all real estate activity in the area as it does not include unrepresented sales, commercial sales or a substantial portion of new home sales. Though the data and materials presented here are deemed to be substantially correct, neither the Tucson Association of REALTORS® nor the MLS guarantees nor is in any way responsible for its accuracy.

# 2010 All Residential Total Sales Volume % of Market by Area



Please note: The data contained in this report is dynamic in nature and therefore subject to change and adjust with the passage of time. These figures and charts are an approximation of the flow of business as observed through the Tucson Association of REALTORS® Multiple Listing Service. This report does not represent all real estate activity in the area as it does not include unrepresented sales, commercial sales or a substantial portion of new home sales. Though the data and materials presented here are deemed to be substantially correct, neither the Tucson Association of REALTORS® nor the MLS guarantees nor is in any way responsible for its accuracy.

## YEAR END 2010 RESIDENTIAL SALES STATISTICS

### 2010 Residential Total Sales Units

	0-2 BR	3 BR	4 BR	5+ BR	ALL BR
N	254	310	245	67	876
NE	96	195	164	52	507
NW	532	1,406	826	134	2,898
XNE	8	4	0	0	12
XNW	10	93	40	4	147
C	504	727	162	39	1,432
E	149	440	231	34	854
S	174	660	283	14	1,131
SE	99	591	355	28	1,073
SW	161	524	326	24	1,035
XSW	214	104	39	1	358
XS	138	367	258	60	823
W	122	338	118	16	594
XW	9	35	16	2	62
Total	2,470	5,794	3,063	475	11,802

### 2010 SFR Total Sales Units

	0-2 BR	3 BR	4 BR	5+ BR	ALL BR
N	41	234	243	67	585
NE	18	170	163	52	403
NW	348	1,319	817	134	2,618
XNE	8	3	0	0	11
XNW	6	40	20	3	69
C	309	637	160	38	1,144
E	18	404	231	34	687
S	148	598	268	12	1,026
SE	67	533	344	26	970
SW	46	455	310	22	833
XSW	84	65	29	1	179
XS	92	350	252	59	753
W	30	297	116	16	459
XW	4	10	10	2	26
Total	1,219	5,115	2,963	466	9,763

### 2010 TH Total Sales Units

	0-2 BR	3 BR	4 BR	5+ BR	ALL BR
N	91	52	2	0	145
NE	54	25	1	0	80
NW	116	34	0	0	150
XNE	0	0	0	0	0
XNW	0	0	0	0	0
C	103	57	1	0	161
E	76	30	0	0	106
S	22	24	0	1	47
SE	28	25	0	0	53
SW	27	2	1	0	30
XSW	103	14	0	0	117
XS	42	3	0	0	45
W	37	22	0	0	59
XW	0	0	0	0	0
Total	699	288	5	1	993

### 2010 CND Total Sales Units

	0-2 BR	3 BR	4 BR	5+ BR	ALL BR
N	122	22	0	0	144
NE	24	0	0	0	24
NW	41	7	1	0	49
XNE	0	0	0	0	0
XNW	0	0	0	0	0
C	90	26	1	0	117
E	54	5	0	0	59
S	0	0	0	0	0
SE	0	0	0	0	0
SW	6	1	0	0	7
XSW	14	0	0	0	14
XS	4	0	0	0	4
W	52	10	0	0	62
XW	0	0	0	0	0
Total	407	71	2	0	480

### 2010 MH Total Sales Units

	0-2 BR	3 BR	4 BR	5+ BR	ALL BR
N	0	0	0	0	0
NE	0	0	0	0	0
NW	8	4	0	0	12
XNE	0	0	0	0	0
XNW	2	3	0	0	5
C	2	0	0	0	2
E	0	0	0	0	0
S	1	1	1	0	3
SE	0	1	0	0	1
SW	46	8	0	0	54
XSW	1	3	0	0	4
XS	1	0	0	0	1
W	1	0	0	0	1
XW	0	0	1	0	1
Total	62	20	2	0	84

### 2010 MSFR Total Sales Units

	0-2 BR	3 BR	4 BR	5+ BR	ALL BR
N	0	0	0	0	0
NE	0	0	0	0	0
NW	19	41	20	0	80
XNE	0	1	0	0	1
XNW	2	50	20	1	73
C	0	7	0	0	7
E	0	1	0	0	1
S	3	36	13	1	53
SE	4	31	9	1	45
SW	36	57	15	2	110
XSW	11	21	10	0	42
XS	0	15	6	1	22
W	2	9	2	0	13
XW	5	25	5	0	35
Total	82	294	100	6	482

Please note: The data contained in this report is dynamic in nature and therefore subject to change and adjust with the passage of time. These figures and charts are an approximation of the flow of business as observed through the Tucson Association of REALTORS® Multiple Listing Service. This report does not represent all real estate activity in the area as it does not include unrepresented sales, commercial sales or a substantial portion of new home sales. Though the data and materials presented here are deemed to be substantially correct, neither the Tucson Association of REALTORS® nor the MLS guarantees nor is in any way responsible for its accuracy.

## 2010 All Residential Total Unit Sales by Price and Area

	N	NE	NW	XNE	XNW	C	E	S	SE	SW	XSW	XS	W	XW	ALL Areas
29,999 or under		7	6		5	22	10	90	3	14	11	1	9	3	181
30,000 - 39,999		3	16		13	32	9	81	12	39	17	2	25	8	257
40,000 - 49,999	2	4	20		15	73	16	92	20	46	14	4	26	6	338
50,000 - 59,999	6	10	20	1	15	61	14	94	28	57	14	5	34	4	363
60,000 - 69,999	3	2	13		11	65	24	50	30	46	13	8	32	2	299
70,000 - 79,999	4	6	31		8	63	24	77	41	70	26	13	28		391
80,000 - 89,999	9	3	36	1	10	82	32	98	47	79	16	16	31	4	464
90,000- 99,999	9	2	44	1	6	87	35	86	28	98	10	18	32	4	460
100,000 - 119,999	31	4	149		8	166	93	182	86	227	46	81	62	7	1,142
120,000 - 139,999	34	27	270	1	21	166	139	127	152	172	55	128	43	9	1,344
140,000 - 159,999	42	28	336		14	135	145	64	145	79	30	134	47	5	1,204
160,000 - 179,999	24	32	320		4	88	109	29	122	43	19	111	33	4	938
180,000 - 199,999	29	35	246		3	74	53	25	97	25	17	89	34	3	730
200,000 - 249,999	75	103	526		7	156	86	30	114	22	32	105	56		1,312
250,000 - 299,999	105	69	316	2	1	69	36	6	69	9	20	59	30	3	794
300,000 - 399,999	186	71	270	4	5	58	16		57	6	16	38	33		760
400,000 - 499,999	101	47	124			16	6		16		2	7	23		342
500,000 - 749,999	138	42	95	2	1	16	5		4	3		4	12		322
750,000 - 999,999	39	9	34			3	2		1				3		91
1,000,000 +	39	3	26						1				1		70
ALL Price Ranges	876	507	2,897	12	147	1,432	854	1,131	1,073	1,035	358	823	594	62	11,802

## 2010 SFR Total Unit Sales by Price and Area

	N	NE	NW	XNE	XNW	C	E	S	SE	SW	XSW	XS	W	XW	ALL Areas
29,999 or under					2	9		67	1	6	2		2	1	90
30,000 - 39,999			1		1	15	0	63	5	11	1		8		105
40,000 - 49,999			4		2	48	1	67	2	21		1	15		161
50,000 - 59,999			4	1	2	48	2	82	18	28	3		15	1	204
60,000 - 69,999			8			47	8	43	20	31	2	2	17	1	179
70,000 - 79,999			16			48	16	70	29	55	3	7	13		257
80,000 - 89,999			21	1	6	66	19	92	35	64	2	10	14	1	331
90,000- 99,999			39	1	4	68	26	83	18	84	2	14	18	4	361
100,000 - 119,999	4		120		4	126	68	181	75	202	23	67	48	2	920
120,000 - 139,999	2	10	240		15	122	108	126	150	158	29	123	40	5	1,128
140,000 - 159,999	3	12	307		13	105	133	66	64	73	22	128	47	2	975
160,000 - 179,999	5	17	306		4	73	105	29	145	42	14	103	33	3	879
180,000 - 199,999	5	28	232		3	61	52	23	121	23	12	85	31	3	679
200,000 - 249,999	36	97	483		6	150	85	30	209	19	32	103	56		1,306
250,000 - 299,999	74	68	295	2	1	68	36	6	66	9	16	58	30	3	732
300,000 - 399,999	149	70	265	4	5	56	15		58	5	16	39	33		715
400,000 - 499,999	93	47	123			16	6		16		2	7	23		333
500,000 - 749,999	137	43	95	2	1	16	5		4	3		4	12		322
750,000 - 999,999	39	9	34			3	2		1				3		91
1,000,000 and Over	39	3	26						1				1		70
ALL Price Ranges	586	404	2,619	11	69	1,145	687	1,028	974	834	181	751	459	26	9,763

Please note: The data contained in this report is dynamic in nature and therefore subject to change and adjust with the passage of time. These figures and charts are an approximation of the flow of business as observed through the Tucson Association of REALTORS® Multiple Listing Service. This report does not represent all real estate activity in the area as it does not include unrepresented sales, commercial sales or a substantial portion of new home sales. Though the data and materials presented here are deemed to be substantially correct, neither the Tucson Association of REALTORS® nor the MLS guarantees nor is in any way responsible for its accuracy.

## 2010 TH Total Unit Sales by Price and Area

	N	NE	NW	XNE	XNW	C	E	S	SE	SW	XSW	XS	W	XW	ALL Areas
29,999 or under						3	2	13	2	1			1		22
30,000 - 39,999						8	1	6	4	3	2		4		28
40,000 - 49,999		1				6	1	9	12	2	5	1	2		39
50,000 - 59,999		4	1			5	6	6	5	4	6	1	4		42
60,000 - 69,999		1				6	5	4	4		5	2	8		35
70,000 - 79,999		5	3			7	2	3	9	3	18	2	8		60
80,000 - 89,999		1	7			10	12	5	9	2	8	3	5		62
90,000 - 99,999		1	1			13	7	1	6	4	6	4	7		50
100,000 - 119,999	3	4	15			22	25		1	10	21	9	14		124
120,000 - 139,999	9	17	18			34	29				25	5			137
140,000 - 159,999	14	16	19			23	12			1	8	4	3		100
160,000 - 179,999	5	15	8			12	4				4	8			56
180,000 - 199,999	13	7	9			5	1				5	2	3		45
200,000 - 249,999	31	6	41			4			1		2	3			88
250,000 - 299,999	26	1	19			1					2	1			50
300,000 - 399,999	36	1	6			2									45
400,000 - 499,999	9														9
500,000 - 749,999	1														1
750,000 - 999,999															0
1,000,000 +															0
ALL Price Ranges	147	80	147	0	0	161	107	47	53	30	117	45	59	0	993

## 2010 CND Total Unit Sales by Price and Area

	N	NE	NW	XNE	XNW	C	E	S	SE	SW	XSW	XS	W	XW	ALL Areas
29,999 or under		7	5			6	8			1			4		31
30,000 - 39,999		3	7			9	8			2	2		9		40
40,000 - 49,999	2	3	5			16	14			4	6		8		58
50,000 - 59,999	6	6	5			8	6				2		12		45
60,000 - 69,999	3	1	1			11	11				1	1	5		34
70,000 - 79,999	4	1				7	6				1		6		25
80,000 - 89,999	9	2				6	1				2		11		31
90,000 - 99,999	9	1				6	2						7		25
100,000 - 119,999	24		6			18	1					2			51
120,000 - 139,999	23		5			10	2								40
140,000 - 159,999	25		7			7						1			40
160,000 - 179,999	14		2			3									19
180,000 - 199,999	11		2			7									20
200,000 - 249,999	9		2			2									13
250,000 - 299,999	4		2												6
300,000 - 399,999	1														1
400,000 - 499,999						1									1
500,000 - 749,999															0
750,000 - 999,999															0
1,000,000 and Over															0
ALL Price Ranges	144	24	49	0	0	117	59	0	0	7	14	4	62	0	480

Please note: The data contained in this report is dynamic in nature and therefore subject to change and adjust with the passage of time. These figures and charts are an approximation of the flow of business as observed through the Tucson Association of REALTORS® Multiple Listing Service. This report does not represent all real estate activity in the area as it does not include unrepresented sales, commercial sales or a substantial portion of new home sales. Though the data and materials presented here are deemed to be substantially correct, neither the Tucson Association of REALTORS® nor the MLS guarantees nor is in any way responsible for its accuracy.

2010 MH Total Unit Sales by Price and Area

	N	NE	NW	XNE	XNW	C	E	S	SE	SW	XSW	XS	W	XW	ALL Areas
29,999 or under						2		2		3					7
30,000 - 39,999					2					7					9
40,000 - 49,999			2		1			1		7	1	1	1		14
50,000 - 59,999			2		2					8				1	13
60,000 - 69,999			1							7	1				9
70,000 - 79,999			4							6	2				12
80,000 - 89,999			1							5					6
90,000- 99,999										3					3
100,000 - 119,999			1							4					5
120,000 - 139,999										1					1
140,000 - 159,999										1					1
160,000 - 179,999			1												1
180,000 - 199,999									1	2					3
200,000 - 249,999															
250,000 - 299,999															
300,000 - 399,999															
400,000 - 499,999															
500,000 - 749,999															
750,000 - 999,999															
1,000,000 +															
ALL Price Ranges	0	0	12	0	5	2	0	3	1	54	4	1	1	1	84

2010 MSFR Total Unit Sales by Price and Area

	N	NE	NW	XNE	XNW	C	E	S	SE	SW	XSW	XS	W	XW	ALL Areas
29,999 or under			1		3	2		8		3	9	1	2	2	31
30,000 - 39,999			8		10			12	3	16	12	2	4	8	75
40,000 - 49,999			9		12	3		15	6	12	2	1		6	66
50,000 - 59,999			8		11			6	5	17	3	4	3	2	59
60,000 - 69,999			3		15	1		3	7	8	4	3	2	1	47
70,000 - 79,999			12		8	1		4	3	10	2	4	1	2	47
80,000 - 89,999			7		4			1	3	8	4	3	1	3	34
90,000- 99,999			4		2			2	4	7	2				21
100,000 - 119,999			7		4			1	10	11	2	3		5	43
120,000 - 139,999			7	1	6			1	2	12	1			4	34
140,000 - 159,999			3		1				1	5		1		1	12
160,000 - 179,999			3						1	1	1			1	7
180,000 - 199,999															0
200,000 - 249,999					1		1			3					5
250,000 - 299,999										1					1
300,000 - 399,999															0
400,000 - 499,999															0
500,000 - 749,999															0
750,000 - 999,999															0
1,000,000 +															0
ALL Price Ranges	0	0	72	1	77	7	1	53	45	114	42	22	13	35	482

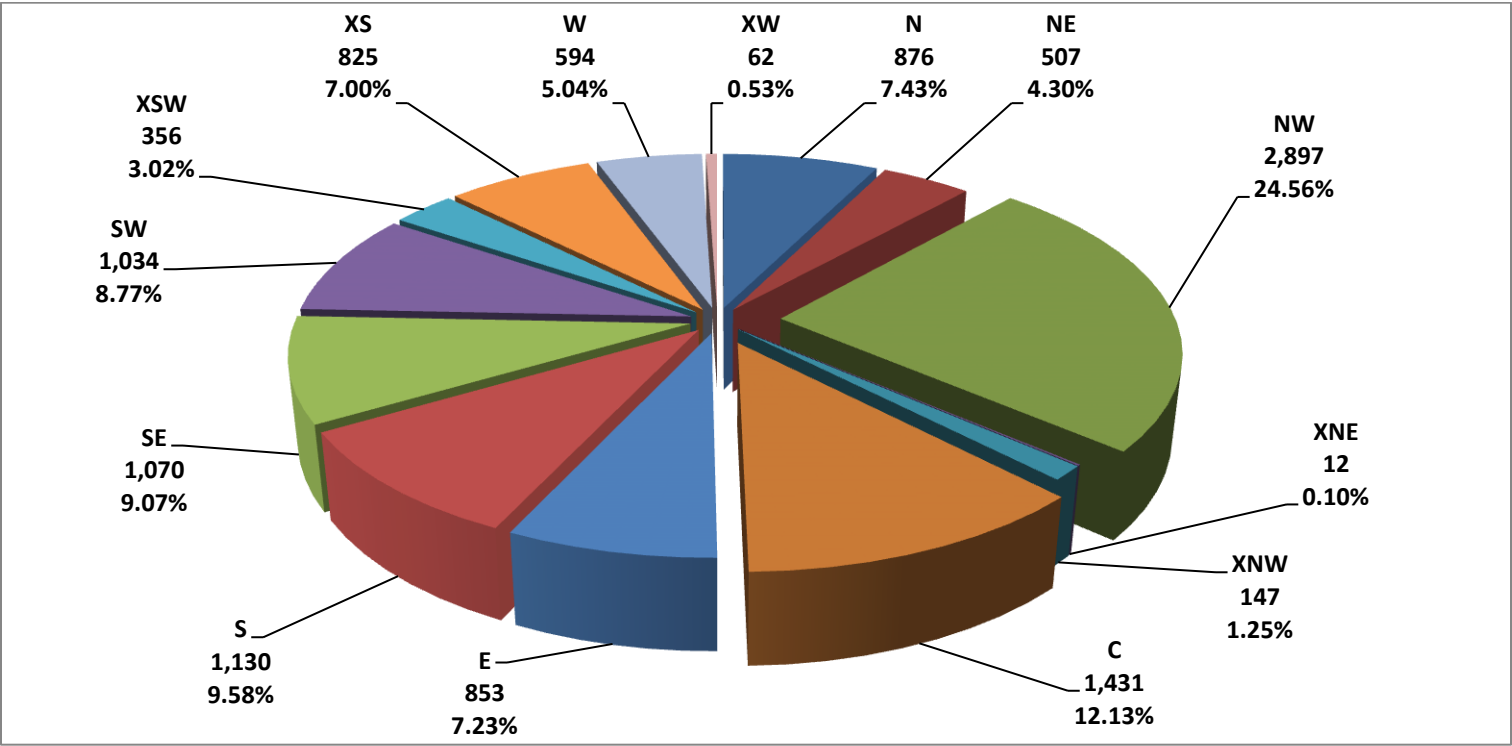
Please note: The data contained in this report is dynamic in nature and therefore subject to change and adjust with the passage of time. These figures and charts are an approximation of the flow of business as observed through the Tucson Association of REALTORS® Multiple Listing Service. This report does not represent all real estate activity in the area as it does not include unrepresented sales, commercial sales or a substantial portion of new home sales. Though the data and materials presented here are deemed to be substantially correct, neither the Tucson Association of REALTORS® nor the MLS guarantees nor is in any way responsible for its accuracy.



## 2010 All RESIDENTIAL – Total Unit Sales by Type

	SFR	TH	CND	MH	MSFR	Total
Jan	609	65	28	8	30	740
Feb	610	84	35	9	41	779
Mar	1,008	115	39	115	46	1221
Apr	1,060	125	50	12	35	1283
May	1,057	116	54	10	47	1285
Jun	1,021	91	51	5	50	1219
Jul	685	57	36	1	47	826
Aug	754	77	37	4	45	917
Sep	769	60	39	8	45	921
Oct	683	62	30	7	23	806
Nov	702	56	38	4	33	834
Dec	807	87	43	3	28	971

## 2010 All RESIDENTIAL Sales by Area



Please note: The data contained in this report is dynamic in nature and therefore subject to change and adjust with the passage of time. These figures and charts are an approximation of the flow of business as observed through the Tucson Association of REALTORS® Multiple Listing Service. This report does not represent all real estate activity in the area as it does not include unrepresented sales, commercial sales or a substantial portion of new home sales. Though the data and materials presented here are deemed to be substantially correct, neither the Tucson Association of REALTORS® nor the MLS guarantees nor is in any way responsible for its accuracy.

## YEAR END 2010 RESIDENTIAL SALES STATISTICS

### All RESIDENTIAL – Avg. Sale Price

	0-2 BR	3 BR	4 BR	5+ BR	ALL BR
N	\$204,671	\$358,623	\$547,777	\$800,731	\$400,701
NE	\$136,437	\$258,103	\$351,586	\$461,026	\$286,118
NW	\$204,082	\$211,037	\$276,890	\$367,014	\$235,751
XNE	\$239,800	\$357,750	\$0	\$0	\$279,117
XNW	\$90,053	\$92,937	\$127,750	\$235,500	\$106,093
C	\$107,896	\$154,937	\$207,501	\$323,582	\$148,798
E	\$92,922	\$146,954	\$188,165	\$251,495	\$152,906
S	\$48,914	\$89,063	\$119,910	\$109,702	\$90,862
SE	\$115,027	\$148,298	\$203,115	\$291,387	\$166,966
SW	\$83,773	\$102,883	\$128,031	\$140,619	\$108,712
XSW	\$133,336	\$138,116	\$152,662	\$150,000	\$136,883
XS	\$156,502	\$158,202	\$194,940	\$246,929	\$175,857
W	\$79,026	\$151,838	\$250,617	\$469,211	\$165,055
XW	\$67,583	\$103,601	\$112,404	\$121,500	\$101,222
Total	\$137,058	\$168,009	\$241,007	\$389,187	\$189,352

### All TH – Avg. Sale Price

	0-2 BR	3 BR	4 BR	5+ BR	ALL BR
N	\$247,241	\$273,880	\$225,750	\$0	\$256,735
NE	\$134,609	\$162,863	\$280,000	\$0	\$145,256
NW	\$183,643	\$179,379	\$0	\$0	\$182,676
XNE	\$0	\$0	\$0	\$0	\$0
XNW	\$0	\$0	\$0	\$0	\$0
C	\$105,480	\$136,533	\$174,500	\$0	\$116,902
E	\$105,014	\$118,717	\$0	\$0	\$108,892
S	\$54,632	\$41,823	\$0	\$58,330	\$48,170
SE	\$70,643	\$64,170	\$0	\$0	\$67,589
SW	\$83,241	\$56,785	\$71,500	\$0	\$81,086
XSW	\$110,688	\$104,618	\$0	\$0	\$109,962
XS	\$133,790	\$75,959	\$0	\$0	\$129,935
W	\$82,867	\$95,525	\$0	\$0	\$87,587
XW	\$0	\$0	\$0	\$0	\$0
Total	\$136,523	\$147,653	\$195,500	\$58,330	\$139,985

### All MH – Avg. Sale Price

	0-2 BR	3 BR	4 BR	5+ BR	ALL BR
N	\$0	\$0	\$0	\$0	\$0
NE	\$0	\$0	\$0	\$0	\$0
NW	\$63,506	\$102,750	\$0	\$0	\$76,588
XNE	\$0	\$0	\$0	\$0	\$0
XNW	\$37,500	\$46,333	\$0	\$0	\$42,800
C	\$17,000	\$0	\$0	\$0	\$17,000
E	\$0	\$0	\$0	\$0	\$0
S	\$21,000	\$26,100	\$40,000	\$0	\$29,033
SE	\$0	\$180,000	\$0	\$0	\$180,000
SW	\$64,550	\$99,025	\$0	\$0	\$69,567
XSW	\$70,000	\$62,600	\$0	\$0	\$64,450
XS	\$49,900	\$0	\$0	\$0	\$49,900
W	\$40,000	\$0	\$0	\$0	\$40,000
XW	\$0	\$0	\$56,000	\$0	\$56,000
Total	\$60,762	\$86,805	\$48,000	\$0	\$66,659

### All SFR– Avg. Sale Price

	0-2 BR	3 BR	4 BR	5+ BR	ALL BR
N	\$333,125	\$394,459	\$550,427	\$800,731	\$501,477
NE	\$261,411	\$272,109	\$352,026	\$461,026	\$328,331
NW	\$234,959	\$216,304	\$279,022	\$367,014	\$246,070
XNE	\$239,800	\$435,000	\$0	\$0	\$293,036
XNW	\$128,418	\$124,350	\$195,425	\$277,333	\$151,957
C	\$117,291	\$158,515	\$208,347	\$323,582	\$159,833
E	\$157,111	\$150,234	\$188,165	\$251,495	\$168,180
S	\$48,271	\$93,533	\$123,416	\$120,042	\$95,147
SE	\$135,204	\$156,527	\$205,710	\$300,364	\$176,382
SW	\$93,602	\$106,582	\$131,780	\$148,768	\$116,357
XSW	\$182,467	\$180,021	\$185,014	\$150,000	\$181,810
XS	\$170,073	\$162,572	\$197,993	\$249,843	\$182,181
W	\$119,435	\$161,216	\$254,058	\$469,211	\$192,685
XW	\$88,588	\$181,400	\$125,053	\$121,500	\$140,842
Total	\$161,861	\$175,556	\$246,478	\$394,088	\$205,809

### All CND– Avg. Sale Price

	0-2 BR	3 BR	4 BR	5+ BR	ALL BR
N	\$129,749	\$185,462	\$0	\$0	\$138,261
NE	\$46,820	\$0	\$0	\$0	\$46,820
NW	\$90,288	\$171,748	\$47,900	\$0	\$101,060
XNE	\$0	\$0	\$0	\$0	\$0
XNW	\$0	\$0	\$0	\$0	\$0
C	\$80,424	\$137,085	\$105,000	\$0	\$93,225
E	\$54,508	\$38,772	\$0	\$0	\$53,174
S	\$0	\$0	\$0	\$0	\$0
SE	\$0	\$0	\$0	\$0	\$0
SW	\$38,192	\$43,000	\$0	\$0	\$38,879
XSW	\$53,386	\$0	\$0	\$0	\$53,386
XS	\$109,475	\$0	\$0	\$0	\$109,475
W	\$55,194	\$88,390	\$0	\$0	\$60,548
XW	\$0	\$0	\$0	\$0	\$0
Total	\$86,292	\$140,385	\$76,450	\$0	\$94,253

### All MSFR – Avg. Sale Price

	0-2 BR	3 BR	4 BR	5+ BR	ALL BR
N	\$0	\$0	\$0	\$0	\$0
NE	\$0	\$0	\$0	\$0	\$0
NW	\$68,063	\$85,124	\$87,817	\$0	\$80,674
XNE	\$0	\$126,000	\$0	\$0	\$126,000
XNW	\$27,510	\$70,603	\$60,074	\$110,000	\$67,078
C	\$0	\$52,550	\$0	\$0	\$52,550
E	\$0	\$210,000	\$0	\$0	\$210,000
S	\$48,000	\$48,050	\$53,515	\$37,000	\$49,179
SE	\$87,750	\$73,632	\$103,656	\$58,000	\$80,544
SW	\$103,772	\$76,558	\$54,321	\$50,978	\$81,967
XSW	\$86,373	\$41,529	\$58,840	\$0	\$55,131
XS	\$0	\$72,666	\$66,704	\$75,000	\$71,146
W	\$41,000	\$50,511	\$51,000	\$0	\$49,123
XW	\$50,780	\$72,481	\$98,387	\$0	\$73,082
Total	\$82,560	\$68,979	\$67,386	\$63,659	\$70,983

Please note: The data contained in this report is dynamic in nature and therefore subject to change and adjust with the passage of time. These figures and charts are an approximation of the flow of business as observed through the Tucson Association of REALTORS® Multiple Listing Service. This report does not represent all real estate activity in the area as it does not include unrepresented sales, commercial sales or a substantial portion of new home sales. Though the data and materials presented here are deemed to be substantially correct, neither the Tucson Association of REALTORS® nor the MLS guarantees nor is in any way responsible for its accuracy.

## YEAR END 2010 RESIDENTIAL SALES STATISTICS

### All RESIDENTIAL – Avg. List Price

	0-2 BR	3 BR	4 BR	5+ BR	ALL BR
<b>N</b>	\$217,175	\$383,166	\$590,140	\$873,589	\$430,432
<b>NE</b>	\$145,897	\$273,199	\$369,997	\$496,217	\$303,279
<b>NW</b>	\$215,985	\$222,009	\$291,054	\$390,334	\$248,375
<b>XNE</b>	\$273,425	\$395,450	\$0	\$0	\$314,100
<b>XNW</b>	\$94,366	\$96,999	\$133,934	\$238,125	\$110,711
<b>C</b>	\$114,252	\$162,913	\$218,690	\$360,141	\$157,326
<b>E</b>	\$99,964	\$152,490	\$195,838	\$264,421	\$159,577
<b>S</b>	\$51,054	\$90,783	\$121,919	\$117,729	\$92,797
<b>SE</b>	\$118,068	\$152,744	\$21,021	\$301,389	\$172,236
<b>SW</b>	\$90,215	\$106,114	\$131,688	\$143,643	\$112,573
<b>XSW</b>	\$144,258	\$146,998	\$763,783	\$157,500	\$147,227
<b>XS</b>	\$167,509	\$163,678	\$200,857	\$254,911	\$182,586
<b>W</b>	\$81,324	\$158,387	\$262,456	\$506,669	\$172,614
<b>XW</b>	\$71,500	\$108,996	\$115,463	\$114,975	\$105,414
<b>Total</b>	\$145,506	\$175,869	\$252,941	\$417,101	\$199,197

### All SFR– Avg. List Price

	0-2 BR	3 BR	4 BR	5+ BR	ALL BR
<b>N</b>	\$353,168	\$420,673	\$592,965	\$873,589	\$539,382
<b>NE</b>	\$283,228	\$287,559	\$370,457	\$496,217	\$347,819
<b>NW</b>	\$248,404	\$227,434	\$293,270	\$390,334	\$259,105
<b>XNE</b>	\$273,425	\$483,300	\$0	\$0	\$330,664
<b>XNW</b>	\$134,443	\$128,085	\$202,328	\$279,200	\$156,728
<b>C</b>	\$123,156	\$166,724	\$219,555	\$360,141	\$168,770
<b>E</b>	\$176,300	\$155,692	\$195,838	\$264,421	\$175,112
<b>S</b>	\$50,401	\$94,936	\$125,355	\$128,367	\$96,876
<b>SE</b>	\$138,019	\$160,923	\$212,746	\$310,558	\$181,762
<b>SW</b>	\$98,555	\$109,512	\$135,442	\$151,252	\$119,659
<b>XSW</b>	\$195,474	\$191,092	\$197,262	\$157,500	\$193,961
<b>XS</b>	\$181,253	\$168,080	\$203,710	\$257,875	\$188,649
<b>W</b>	\$124,466	\$167,994	\$265,990	\$506,669	\$201,721
<b>XW</b>	\$98,700	\$189,650	\$126,190	\$114,975	\$145,506
<b>Total</b>	\$171,213	\$183,459	\$158,606	\$418,440	\$216,147

### All TH– Avg. List Price

	0-2 BR	3 BR	4 BR	5+ BR	ALL BR
<b>N</b>	\$260,707	\$297,104	\$246,900	\$0	\$273,890
<b>NE</b>	\$142,148	\$175,548	\$295,000	\$0	\$154,196
<b>NW</b>	\$193,384	\$189,666	\$0	\$0	\$192,541
<b>XNE</b>	\$0	\$0	\$0	\$0	\$0
<b>XNW</b>	\$0	\$0	\$0	\$0	\$0
<b>C</b>	\$113,565	\$143,641	\$179,000	\$0	\$124,620
<b>E</b>	\$110,321	\$124,917	\$0	\$0	\$114,452
<b>S</b>	\$56,914	\$44,408	\$0	\$61,400	\$50,623
<b>SE</b>	\$73,132	\$66,859	\$0	\$0	\$70,173
<b>SW</b>	\$89,094	\$60,140	\$69,000	\$0	\$86,494
<b>XSW</b>	\$120,993	\$111,560	\$0	\$0	\$119,864
<b>XS</b>	\$144,860	\$83,167	\$0	\$0	\$140,747
<b>W</b>	\$86,755	\$100,216	\$0	\$0	\$91,775
<b>XW</b>	\$0	\$0	\$0	\$0	\$0
<b>Total</b>	\$145,030	\$157,550	\$207,360	\$61,400	\$148,909

### All CND– Avg. List Price

	0-2 BR	3 BR	4 BR	5+ BR	ALL BR
<b>N</b>	\$139,001	\$195,472	\$0	\$0	\$147,629
<b>NE</b>	\$51,333	\$0	\$0	\$0	\$51,333
<b>NW</b>	\$98,081	\$202,777	\$47,900	\$0	\$112,014
<b>XNE</b>	\$0	\$0	\$0	\$0	\$0
<b>XNW</b>	\$0	\$0	\$0	\$0	\$0
<b>C</b>	\$86,452	\$141,519	\$120,000	\$0	\$98,976
<b>E</b>	\$59,943	\$45,296	\$0	\$0	\$58,702
<b>S</b>	\$0	\$0	\$0	\$0	\$0
<b>SE</b>	\$0	\$0	\$0	\$0	\$0
<b>SW</b>	\$40,217	\$45,900	\$0	\$0	\$41,029
<b>XSW</b>	\$58,014	\$0	\$0	\$0	\$58,014
<b>XS</b>	\$118,608	\$0	\$0	\$0	\$118,608
<b>W</b>	\$54,687	\$91,790	\$0	\$0	\$60,671
<b>XW</b>	\$0	\$0	\$0	\$0	\$0
<b>Total</b>	\$92,385	\$149,149	\$83,950	\$0	\$100,746

### All MH – Avg. List Price

	0-2 BR	3 BR	4 BR	5+ BR	ALL BR
<b>N</b>	\$0	\$0	\$0	\$0	\$0
<b>NE</b>	\$0	\$0	\$0	\$0	\$0
<b>NW</b>	\$69,425	\$110,000	\$0	\$0	\$82,950
<b>XNE</b>	\$0	\$0	\$0	\$0	\$0
<b>XNW</b>	\$42,250	\$51,123	\$0	\$0	\$47,574
<b>C</b>	\$24,900	\$0	\$0	\$0	\$24,900
<b>E</b>	\$0	\$0	\$0	\$0	\$0
<b>S</b>	\$22,000	\$24,999	\$40,000	\$0	\$31,500
<b>SE</b>	\$0	\$179,000	\$0	\$0	\$179,000
<b>SW</b>	\$71,945	\$106,600	\$0	\$0	\$77,079
<b>XSW</b>	\$82,500	\$60,933	\$0	\$0	\$66,325
<b>XS</b>	\$49,900	\$0	\$0	\$0	\$49,900
<b>W</b>	\$45,000	\$0	\$0	\$0	\$45,000
<b>XW</b>	\$0	\$0	\$69,900	\$0	\$69,900
<b>Total</b>	\$67,719	\$91,648	\$58,700	\$0	\$73,201

### All MSFR – Avg. List Price

	0-2 BR	3 BR	4 BR	5+ BR	ALL BR
<b>N</b>	\$0	\$0	\$0	\$0	\$0
<b>NE</b>	\$0	\$0	\$0	\$0	\$0
<b>NW</b>	\$76,326	\$88,531	\$95,206	\$0	\$85,906
<b>XNE</b>	\$0	\$131,900	\$0	\$0	\$131,900
<b>XNW</b>	\$26,250	\$74,883	\$65,540	\$114,900	\$71,539
<b>C</b>	\$0	\$45,540	\$0	\$0	\$45,540
<b>E</b>	\$0	\$222,000	\$0	\$0	\$222,000
<b>S</b>	\$49,967	\$54,548	\$56,554	\$46,400	\$54,627
<b>SE</b>	\$98,450	\$80,542	\$105,550	\$63,000	\$86,746
<b>SW</b>	\$112,078	\$81,593	\$58,284	\$59,950	\$87,998
<b>XSW</b>	\$77,727	\$46,438	\$66,695	\$0	\$61,720
<b>XS</b>	\$0	\$77,066	\$81,033	\$80,000	\$78,282
<b>W</b>	\$44,450	\$57,533	\$57,450	\$0	\$55,508
<b>XW</b>	\$49,740	\$76,735	\$103,120	\$0	\$76,648
<b>Total</b>	\$89,865	\$74,062	\$72,904	\$70,700	\$76,559

Please note: The data contained in this report is dynamic in nature and therefore subject to change and adjust with the passage of time. These figures and charts are an approximation of the flow of business as observed through the Tucson Association of REALTORS® Multiple Listing Service. This report does not represent all real estate activity in the area as it does not include unrepresented sales, commercial sales or a substantial portion of new home sales. Though the data and materials presented here are deemed to be substantially correct, neither the Tucson Association of REALTORS® nor the MLS guarantees nor is in any way responsible for its accuracy.

## YEAR END 2010 RESIDENTIAL SALES STATISTICS

### All RESIDENTIAL – Avg. DOM

	0-2 BR	3 BR	4 BR	5+ BR	ALL BR
<b>N</b>	102	97	106	98	98
<b>NE</b>	102	91	113	78	99
<b>NW</b>	110	91	93	102	95
<b>XNE</b>	258	76	0	0	197
<b>XNW</b>	91	102	101	101	101
<b>C</b>	82	83	82	103	83
<b>E</b>	87	75	80	75	79
<b>S</b>	68	68	77	73	70
<b>SE</b>	90	78	79	79	79
<b>SW</b>	125	72	71	82	82
<b>XSW</b>	113	99	102	37	107
<b>XS</b>	124	92	94	84	97
<b>W</b>	64	83	99	164	84
<b>XW</b>	104	113	116	49	110
<b>Total</b>	98	83	89	93	88

### All TH/NC – Avg. DOM

	0-2 BR	3 BR	4 BR	5+ BR	ALL BR
<b>N</b>	98	97	74	0	97
<b>NE</b>	106	84	82	0	99
<b>NW</b>	100	94	0	0	99
<b>XNE</b>	0	0	0	0	0
<b>XNW</b>	0	0	0	0	0
<b>C</b>	85	100	12	0	90
<b>E</b>	87	77	0	0	84
<b>S</b>	72	62	0	63	66
<b>SE</b>	59	51	0	0	55
<b>SW</b>	143	40	41	0	133
<b>XSW</b>	111	95	0	0	109
<b>XS</b>	117	102	0	0	116
<b>W</b>	68	91	0	0	76
<b>XW</b>	0	0	0	0	0
<b>Total</b>	96	86	57	63	93

### All MH – Avg. DOM

	0-2 BR	3 BR	4 BR	5+ BR	ALL BR
<b>N</b>	0	0	0	0	0
<b>NE</b>	0	0	0	0	0
<b>NW</b>	71	67	0	0	70
<b>XNE</b>	0	0	0	0	0
<b>XNW</b>	224	34	0	0	113
<b>C</b>	251	0	0	0	251
<b>E</b>	0	0	0	0	0
<b>S</b>	3	100	0	0	58
<b>SE</b>	0	10	0	0	10
<b>SW</b>	177	92	0	0	164
<b>XSW</b>	137	17	0	0	47
<b>XS</b>	33	0	0	0	33
<b>W</b>	12	0	0	0	12
<b>XW</b>	0	0	35	0	35
<b>Total</b>	159	61	68	0	134

### All SFR/NC – Avg. DOM

	0-2 BR	3 BR	4 BR	5+ BR	ALL BR
<b>N</b>	83	99	107	99	101
<b>NE</b>	103	92	113	78	99
<b>NW</b>	112	90	92	102	102
<b>XNE</b>	158	63	0	0	205
<b>XNW</b>	64	119	81	95	102
<b>C</b>	73	79	81	103	103
<b>E</b>	57	74	80	75	75
<b>S</b>	69	66	75	73	69
<b>SE</b>	98	78	79	78	80
<b>SW</b>	74	71	70	73	71
<b>XSW</b>	113	105	103	37	108
<b>XS</b>	128	92	89	83	95
<b>W</b>	68	82	98	164	88
<b>XW</b>	180	170	79	49	127
<b>Total</b>	94	82	88	93	86

### All CND/NC – Avg. DOM

	0-2 BR	3 BR	4 BR	5+ BR	ALL BR
<b>N</b>	112	83	0	0	107
<b>NE</b>	90	0	0	0	90
<b>NW</b>	150	106	8	0	141
<b>XNE</b>	0	0	0	0	0
<b>XNW</b>	0	0	0	0	0
<b>C</b>	105	154	336	0	118
<b>E</b>	98	195	0	0	106
<b>S</b>	0	0	0	0	0
<b>SE</b>	0	0	0	0	0
<b>SW</b>	62	16	0	0	55
<b>XSW</b>	112	0	0	0	112
<b>XS</b>	156	0	0	0	156
<b>W</b>	60	103	0	0	67
<b>XW</b>	0	0	0	0	0
<b>Total</b>	104	121	172	0	107

### All MSFR – Avg. DOM

	0-2 BR	3 BR	4 BR	5+ BR	ALL BR
<b>N</b>	0	0	0	0	0
<b>NE</b>	0	0	0	0	0
<b>NW</b>	75	99	119	0	95
<b>XNE</b>	0	112	0	0	112
<b>XNW</b>	38	93	121	120	99
<b>C</b>	0	91	0	0	91
<b>E</b>	0	37	0	0	37
<b>S</b>	10	103	133	82	105
<b>SE</b>	166	95	64	116	96
<b>SW</b>	122	80	83	186	96
<b>XSW</b>	128	94	100	0	104
<b>XS</b>	0	84	283	126	140
<b>W</b>	90	70	159	0	87
<b>XW</b>	44	90	204	0	100
<b>Total</b>	102	91	124	136	100

Please note: The data contained in this report is dynamic in nature and therefore subject to change and adjust with the passage of time. These figures and charts are an approximation of the flow of business as observed through the Tucson Association of REALTORS® Multiple Listing Service. This report does not represent all real estate activity in the area as it does not include unrepresented sales, commercial sales or a substantial portion of new home sales. Though the data and materials presented here are deemed to be substantially correct, neither the Tucson Association of REALTORS® nor the MLS guarantees nor is in any way responsible for its accuracy.

## 2010 All Residential Avg. DOM by Price and Area

	N	NE	NW	XNE	XNW	C	E	S	SE	SW	XSW	XS	W	XW	Total
29,999 or under	0	49	52	0	32	106	106	68	97	52	90	63	42	61	72
30,000 - 39,999	0	102	84	0	71	71	96	57	60	112	89	15	67	89	75
40,000 - 49,999	102	82	86	0	107	76	132	70	61	79	105	80	96	54	81
50,000 - 59,999	112	88	95	292	77	63	81	70	82	101	105	109	84	60	82
60,000 - 69,999	134	57	128	0	94	69	86	84	50	77	95	117	55	47	77
70,000 - 79,999	138	141	77	0	131	95	69	64	64	93	120	100	68	170	84
80,000 - 89,999	107	94	81	36	61	82	81	69	63	68	107	92	73	65	75
90,000 - 99,999	124	114	79	71	134	71	69	52	108	75	156	93	77	187	78
100,000 - 119,999	80	130	99	0	126	89	81	67	74	76	111	91	67	111	83
120,000 - 139,999	108	88	85	112	136	82	76	78	74	67	93	96	54	157	82
140,000 - 159,999	117	120	84	0	89	85	84	91	79	75	90	98	62	67	86
160,000 - 179,999	87	79	81	0	67	85	59	60	78	87	96	94	98	180	81
180,000 - 199,999	111	95	97	0	134	79	84	73	86	89	137	114	93	103	95
200,000 - 249,999	100	87	93	0	97	94	72	90	87	112	96	92	95	0	91
250,000 - 299,999	87	99	104	490	54	89	78	157	87	69	107	98	122	172	99
300,000 - 399,999	96	104	101	179	183	71	99	0	82	230	175	108	114	0	101
400,000 - 499,999	100	99	109	0	0	109	75	0	124	0	159	100	141	0	107
500,000 - 749,999	106	123	129	80	113	82	158	0	153	117	0	102	153	0	117
750,000 - 999,999	112	96	179	0	0	87	130	0	105	0	0	0	219	0	138
1,000,000 and Over	123	225	174	0	0	0	0	0	185	0	0	0	168	0	148
ALL Price Ranges	101	99	95	197	101	83	79	70	79	80	107	97	84	110	88

## 2010 All SFR Avg. DOM by Price and Area

	N	NE	NW	XNE	XNW	C	E	S	SE	SW	XSW	XS	W	XW	Total
29,999 or under	0	0	0	0	42	71	0	70	105	38	41	0	36	152	67
30,000 - 39,999	0	0	75	0	204	62	0	55	28	110	26	0	64	0	63
40,000 - 49,999	0	0	117	0	72	74	91	68	57	82	0	134	110	0	77
50,000 - 59,999	0	0	135	292	113	59	64	64	84	86	72	0	113	41	74
60,000 - 69,999	0	0	81	0	0	73	76	64	55	62	80	177	38	26	65
70,000 - 79,999	0	0	80	0	0	74	52	59	67	79	195	109	40	0	70
80,000 - 89,999	0	0	98	36	53	63	79	69	67	55	51	95	59	12	67
90,000 - 99,999	0	0	80	71	181	71	59	51	105	77	19	93	77	187	73
100,000 - 119,999	61	0	86	0	73	77	75	68	74	63	102	75	69	81	73
120,000 - 139,999	32	97	81	0	100	76	76	77	73	62	99	97	54	181	78
140,000 - 159,999	48	90	80	0	95	79	85	91	77	65	92	97	62	61	82
160,000 - 179,999	50	83	81	0	67	86	58	60	78	83	104	91	98	106	80
180,000 - 199,999	71	90	94	0	134	80	85	73	86	93	135	105	91	103	92
200,000 - 249,999	113	87	93	0	96	93	72	90	88	107	97	88	95	0	91
250,000 - 299,999	94	99	103	490	54	89	78	157	87	77	110	100	122	172	100
300,000 - 399,999	95	104	100	179	183	69	99	0	82	230	175	108	114	0	100
400,000 - 499,999	99	99	109	0	0	110	75	0	124	0	159	100	141	0	107
500,000 - 749,999	106	123	129	80	113	82	158	0	153	117	0	102	153	0	117
750,000 - 999,999	112	96	179	0	0	87	130	0	105	0	0	0	219	0	138
1,000,000 and Over	123	225	174	0	0	0	0	0	185	0	0	0	168	0	148
ALL Price Ranges	101	99	94	205	102	78	75	69	80	71	108	95	88	127	86

Please note: The data contained in this report is dynamic in nature and therefore subject to change and adjust with the passage of time. These figures and charts are an approximation of the flow of business as observed through the Tucson Association of REALTORS® Multiple Listing Service. This report does not represent all real estate activity in the area as it does not include unrepresented sales, commercial sales or a substantial portion of new home sales. Though the data and materials presented here are deemed to be substantially correct, neither the Tucson Association of REALTORS® nor the MLS guarantees nor is in any way responsible for its accuracy.

## 2010 All TH Avg. DOM by Price and Area

	N	NE	NW	XNE	XNW	C	E	S	SE	SW	XSW	XS	W	XW	Total
29,999 or under	0	0	0	0	0	28	81	62	94	26	0	0	0	0	58
30,000 - 39,999	0	0	0	0	0	53	6	71	70	106	79	0	83	0	69
40,000 - 49,999	0	78	0	0	0	91	222	66	50	101	126	83	205	0	86
50,000 - 59,999	0	76	140	0	0	96	75	71	81	88	121	115	97	0	90
60,000 - 69,999	0	29	0	0	0	29	100	44	14	0	124	39	63	0	61
70,000 - 79,999	0	119	80	0	0	163	65	112	51	33	114	11	88	0	96
80,000 - 89,999	0	94	42	0	0	165	83	70	58	123	93	45	63	0	86
90,000 - 99,999	0	67	140	0	0	63	80	9	60	67	185	94	69	0	84
100,000 - 119,999	55	130	78	0	0	98	98	0	28	227	123	92	60	0	105
120,000 - 139,999	97	83	87	0	0	98	80	0	0	206	87	71	53	0	88
140,000 - 159,999	95	142	111	0	0	86	66	0	0	0	84	121	0	0	100
160,000 - 179,999	228	74	117	0	0	78	94	0	0	0	69	128	0	0	104
180,000 - 199,999	69	113	136	0	0	29	8	0	0	0	143	503	115	0	115
200,000 - 249,999	98	80	90	0	0	78	0	0	34	0	82	236	0	0	96
250,000 - 299,999	77	82	114	0	0	58	0	0	0	0	79	4	0	0	89
300,000 - 399,999	105	84	128	0	0	127	0	0	0	0	0	0	0	0	109
400,000 - 499,999	112	0	0	0	0	0	0	0	0	0	0	0	0	0	112
500,000 - 749,999	30	0	0	0	0	0	0	0	0	0	0	0	0	0	0
750,000 - 999,999	0	0	0	0	0	0	0	0	0	0	0	0	0	0	30
1,000,000 and Over	0	0	0	0	0	0	0	0	0	0	0	0	0	0	0
ALL Price Ranges	97	99	99	0	0	90	84	66	55	133	109	116	76	0	93

## 2010 All CND Avg. DOM by Price and Area

	N	NE	NW	XNE	XNW	C	E	S	SE	SW	XSW	XS	W	XW	Total
29,999 or under	0	49	54	0	0	154	112	0	0	105	0	0	31	0	86
30,000 - 39,999	0	102	102	0	0	104	107	0	0	84	193	0	58	0	97
40,000 - 49,999	102	83	68	0	0	76	128	0	0	28	113	0	52	0	86
50,000 - 59,999	112	96	48	0	0	72	92	0	0	0	13	0	45	0	71
60,000 - 69,999	134	85	683	0	0	72	86	0	0	0	3	318	50	0	102
70,000 - 79,999	138	251	0	0	0	167	116	0	0	0	71	0	102	0	134
80,000 - 89,999	107	95	0	0	0	154	80	0	0	0	202	0	98	0	118
90,000 - 99,999	124	160	0	0	0	88	163	0	0	0	0	0	86	0	109
100,000 - 119,999	86	0	314	0	0	162	33	0	0	0	0	147	0	0	139
120,000 - 139,999	120	0	190	0	0	104	34	0	0	0	0	0	0	0	120
140,000 - 159,999	138	0	161	0	0	169	0	0	0	0	0	108	0	0	147
160,000 - 179,999	50	0	67	0	0	83	0	0	0	0	0	0	0	0	57
180,000 - 199,999	177	0	156	0	0	110	0	0	0	0	0	0	0	0	151
200,000 - 249,999	57	0	20	0	0	218	0	0	0	0	0	0	0	0	76
250,000 - 299,999	23	0	105	0	0	0	0	0	0	0	0	0	0	0	50
300,000 - 399,999	0	0	0	0	0	0	0	0	0	0	0	0	0	0	0
400,000 - 499,999	0	0	0	0	0	110	0	0	0	0	0	0	0	0	110
500,000 - 749,999	0	0	0	0	0	0	0	0	0	0	0	0	0	0	0
750,000 - 999,999	0	0	0	0	0	0	0	0	0	0	0	0	0	0	0
1,000,000 and Over	0	0	0	0	0	0	0	0	0	0	0	0	0	0	0
ALL Price Ranges	107	90	141	0	0	118	106	0	0	55	112	156	67	0	107

Please note: The data contained in this report is dynamic in nature and therefore subject to change and adjust with the passage of time. These figures and charts are an approximation of the flow of business as observed through the Tucson Association of REALTORS® Multiple Listing Service. This report does not represent all real estate activity in the area as it does not include unrepresented sales, commercial sales or a substantial portion of new home sales. Though the data and materials presented here are deemed to be substantially correct, neither the Tucson Association of REALTORS® nor the MLS guarantees nor is in any way responsible for its accuracy.

## 2010 All MH Avg. DOM by Price and Area

	N	NE	NW	XNE	XNW	C	E	S	SE	SW	XSW	XS	W	XW	Total
29,999 or under	0	0	0	0	0	251	0	38	0	75	0	0	0	0	115
30,000 - 39,999	0	0	0	0	54	0	0	0	0	214	0	0	0	0	178
40,000 - 49,999	0	0	114	0	357	0	0	100	0	99	13	33	12	0	102
50,000 - 59,999	0	0	59	0	50	0	0	0	0	224	0	0	0	35	157
60,000 - 69,999	0	0	44	0	0	0	0	0	0	136	31	0	0	0	114
70,000 - 79,999	0	0	33	0	0	0	0	0	0	68	72	0	0	0	155
80,000 - 89,999	0	0	88	0	0	0	0	0	0	0	0	0	0	0	71
90,000 - 99,999	0	0	0	0	0	0	0	0	0	50	0	0	0	0	50
100,000 - 119,999	0	0	68	0	0	0	0	0	0	272	0	0	0	0	231
120,000 - 139,999	0	0	0	0	0	0	0	0	0	345	0	0	0	0	345
140,000 - 159,999	0	0	0	0	0	0	0	0	0	114	0	0	0	0	114
160,000 - 179,999	0	0	165	0	0	0	0	0	0	0	0	0	0	0	165
180,000 - 199,999	0	0	0	0	0	0	0	0	10	45	0	0	0	0	31
200,000 - 249,999	0	0	0	0	0	0	0	0	0	0	0	0	0	0	0
250,000 - 299,999	0	0	0	0	0	0	0	0	0	0	0	0	0	0	0
300,000 - 399,999	0	0	0	0	0	0	0	0	0	0	0	0	0	0	0
400,000 - 499,999	0	0	0	0	0	0	0	0	0	0	0	0	0	0	0
500,000 - 749,999	0	0	0	0	0	0	0	0	0	0	0	0	0	0	0
750,000 - 999,999	0	0	0	0	0	0	0	0	0	0	0	0	0	0	0
1,000,000 and Over	0	0	0	0	0	0	0	0	0	0	0	0	0	0	0
ALL Price Ranges	0	0	70	0	113	251	0	58	10	164	47	33	12	35	134

## 2010 All MSFR Avg. DOM by Price and Area

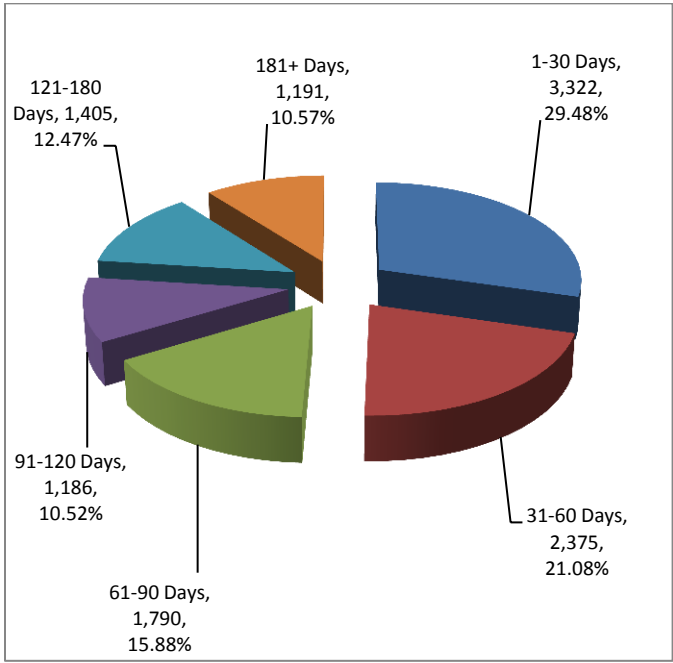
	N	NE	NW	XNE	XNW	C	E	S	SE	SW	XSW	XS	W	XW	Total
29,999 or under	0	0	39	0	25	88	0	70	0	49	101	63	82	16	70
30,000 - 39,999	0	0	69	0	62	0	0	59	99	73	78	15	76	89	71
40,000 - 49,999	0	0	77	0	93	90	0	76	87	74	79	70	73	54	78
50,000 - 59,999	0	0	109	0	75	0	0	144	74	71	169	107	175	82	92
60,000 - 69,999	0	0	96	0	94	70	0	421	54	81	104	62	0	68	109
70,000 - 79,999	0	0	90	0	131	122	0	123	68	88	132	129	63	170	110
80,000 - 89,999	0	0	68	0	72	0	0	70	29	159	114	127	26	83	97
90,000 - 99,999	0	0	55	0	39	0	0	138	189	70	209	0	0	0	106
100,000 - 119,999	0	0	182	0	180	0	0	46	82	108	88	430	0	122	142
120,000 - 139,999	0	0	137	112	224	0	0	138	159	104	45	0	0	128	138
140,000 - 159,999	0	0	72	0	0	0	0	0	432	218	0	120	0	80	210
160,000 - 179,999	0	0	40	0	4	0	0	0	130	251	96	0	0	403	114
180,000 - 199,999	0	0	0	0	0	0	0	0	0	0	0	0	0	0	143
200,000 - 249,999	0	0	0	0	107	0	37	0	0	143	0	0	0	0	114
250,000 - 299,999	0	0	0	0	0	0	0	0	0	0	0	0	0	0	0
300,000 - 399,999	0	0	0	0	0	0	0	0	0	0	0	0	0	0	0
400,000 - 499,999	0	0	0	0	0	0	0	0	0	0	0	0	0	0	0
500,000 - 749,999	0	0	0	0	0	0	0	0	0	0	0	0	0	0	0
750,000 - 999,999	0	0	0	0	0	0	0	0	0	0	0	0	0	0	0
1,000,000 and Over	0	0	0	0	0	0	0	0	0	0	0	0	0	0	0
ALL Price Ranges	0	0	95	112	99	91	37	105	96	96	104	140	87	100	100

Please note: The data contained in this report is dynamic in nature and therefore subject to change and adjust with the passage of time. These figures and charts are an approximation of the flow of business as observed through the Tucson Association of REALTORS® Multiple Listing Service. This report does not represent all real estate activity in the area as it does not include unrepresented sales, commercial sales or a substantial portion of new home sales. Though the data and materials presented here are deemed to be substantially correct, neither the Tucson Association of REALTORS® nor the MLS guarantees nor is in any way responsible for its accuracy.

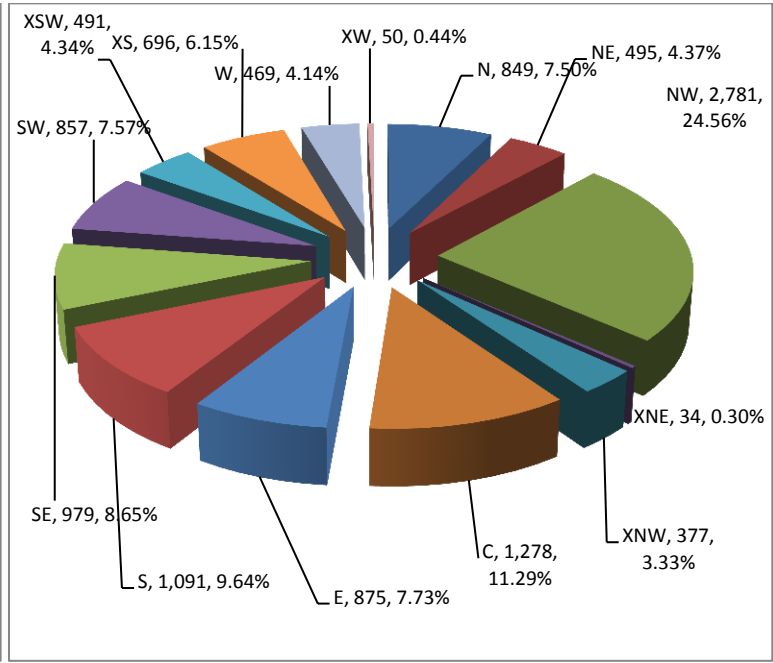
All RESIDENTIAL Avg. % - LP/SP

	SFR	TH	CND	MH	MSFR
N	92.98%	93.74%	93.65%	0.00%	0.00%
NE	94.40%	94.02%	91.21%	0.00%	0.00%
NW	94.97%	94.88%	90.22%	92.33%	93.91%
XNE	88.62%	0.00%	0.00%	0.00%	95.53%
XNW	96.96%	0.00%	0.00%	89.97%	93.76%
C	94.70%	93.81%	94.14%	68.27%	86.66%
E	96.04%	95.14%	90.58%	0.00%	94.59%
S	98.22%	95.15%	0.00%	92.17%	90.03%
SE	97.04%	96.32%	0.00%	100.56%	92.85%
SW	97.24%	93.75%	94.76%	90.37%	93.15%
XSW	93.75%	91.74%	92.02%	97.17%	89.32%
XS	96.57%	92.32%	92.30%	100.00%	90.89%
W	95.52%	95.44%	99.80%	88.89%	88.50%
XW	96.79%	0.00%	0.00%	80.11%	95.35%
ALL s	93.22%	94.01%	93.55%	91.06%	92.72%

All RESIDENTIAL - Days on Market



Total Listings By Area



Please note: The data contained in this report is dynamic in nature and therefore subject to change and adjust with the passage of time. These figures and charts are an approximation of the flow of business as observed through the Tucson Association of REALTORS® Multiple Listing Service. This report does not represent all real estate activity in the area as it does not include unrepresented sales, commercial sales or a substantial portion of new home sales. Though the data and materials presented here are deemed to be substantially correct, neither the Tucson Association of REALTORS® nor the MLS guarantees nor is in any way responsible for its accuracy.



YEAR END 2010 RESIDENTIAL SALES STATISTICS

All RESIDENTIAL – Total Listings

	0-2 BR	3 BR	4 BR	5+ BR	ALL BR
N	839	948	820	306	2,913
NE	239	605	551	194	1,589
NW	1,627	3,582	2,272	434	7,915
XNE	22	26	7	1	56
XNW	49	277	100	17	443
C	1,440	2,031	495	141	4,107
E	406	1140	546	86	2,178
S	395	1,406	557	32	2,390
SE	236	1,453	885	100	2,674
SW	419	1227	726	71	2,443
XSW	671	359	114	10	1,154
XS	471	900	678	140	2,189
W	374	877	359	55	1,665
XW	34	116	44	4	198
Total	7,222	14,947	8,154	1,591	31,914

All SFR – Total Listings

	0-2 BR	3 BR	4 BR	5+ BR	ALL BR
N	124	672	814	306	1,916
NE	44	509	541	194	1,288
NW	1,019	3,268	2,224	422	6,933
XNE	22	24	7	1	54
XNW	23	96	49	12	180
C	804	1,764	487	140	3,195
E	57	1017	545	86	1,705
S	313	1,259	521	29	2,122
SE	161	1,303	851	98	2,413
SW	105	1009	674	67	1,855
XSW	311	232	79	6	628
XS	305	834	651	135	1,925
W	96	742	349	55	1,242
XW	14	25	22	2	63
Total	3,398	12,754	7,814	1,553	25,519

All TH – Total Listings

	0-2 BR	3 BR	4 BR	5+ BR	ALL BR
N	248	199	6	0	453
NE	125	93	9	0	227
NW	393	107	0	1	501
XNE	0	0	0	0	0
XNW	0	0	0	0	0
C	268	163	5	0	436
E	162	91	1	0	254
S	72	36	2	1	111
SE	64	49	0	0	113
SW	70	10	2	0	82
XSW	265	27	0	0	292
XS	139	15	0	0	154
W	131	77	1	0	209
XW	0	0	0	0	0
Total	1,937	867	26	2	2,832

All CND – Total Listings

	0-2 BR	3 BR	4 BR	5+ BR	ALL BR
N	467	77	0	0	544
NE	70	3	1	0	74
NW	123	32	4	0	159
XNE	0	0	0	0	0
XNW	0	0	0	0	0
C	362	81	3	1	447
E	187	25	0	0	212
S	1	1	0	0	2
SE	2	1	0	0	3
SW	10	2	0	0	12
XSW	43	0	0	0	43
XS	15	0	0	0	15
W	129	24	0	0	153
XW	0	0	0	0	0
Total	1,409	246	8	1	1,664

All MH – Total Listings

	0-2 BR	3 BR	4 BR	5+ BR	ALL BR
N	0	0	0	0	0
NE	0	0	0	0	0
NW	30	18	4	0	52
XNE	0	0	0	0	0
XNW	4	11	1	0	16
C	3	0	0	0	3
E	0	0	0	0	0
S	3	6	1	0	10
SE	0	1	1	0	2
SW	123	30	0	0	153
XSW	6	12	2	0	20
XS	3	0	2	0	5
W	8	2	0	0	10
XW	1	2	1	0	4
Total	181	82	12	0	275

All MSFR – Total Listings

	0-2 BR	3 BR	4 BR	5+ BR	ALL BR
N	0	0	0	0	0
NE	0	0	0	0	0
NW	62	157	40	11	270
XNE	0	2	0	0	2
XNW	22	170	50	5	247
C	3	23	0	0	26
E	0	7	0	0	7
S	6	104	33	2	145
SE	9	99	33	2	143
SW	111	176	50	4	341
XSW	46	88	33	4	171
XS	9	51	25	5	90
W	10	32	9	0	51
XW	19	89	21	2	131
Total	297	998	294	35	1,624

Please note: The data contained in this report is dynamic in nature and therefore subject to change and adjust with the passage of time. These figures and charts are an approximation of the flow of business as observed through the Tucson Association of REALTORS® Multiple Listing Service. This report does not represent all real estate activity in the area as it does not include unrepresented sales, commercial sales or a substantial portion of new home sales. Though the data and materials presented here are deemed to be substantially correct, neither the Tucson Association of REALTORS® nor the MLS guarantees nor is in any way responsible for its accuracy.

2010 All RESIDENTIAL – Total Listings by Price and Area (1/1/10-12/31/10)

	N	NE	NW	XNE	XNW	C	E	S	SE	SW	XSW	XS	W	XW	All Areas
29,999 or under	1	15	10	0	4	39	19	103	4	21	15	3	17	7	258
30,000 - 39,999	0	9	30	1	25	63	25	150	21	48	29	4	45	16	466
40,000 - 49,999	1	11	35	1	28	130	32	174	32	96	27	6	54	13	640
50,000 - 59,999	4	23	35	1	35	126	36	183	40	116	48	6	79	11	743
60,000 - 69,999	23	7	49	0	21	162	72	181	63	153	50	19	80	6	886
70,000 - 79,999	15	11	74	0	33	186	62	200	89	178	55	20	72	12	1,007
80,000 - 89,999	32	13	79	1	26	196	94	235	103	234	41	39	117	15	1,225
90,000 - 99,999	35	7	137	1	28	245	85	247	95	268	42	62	83	18	1,353
100,000 - 119,999	73	29	359	0	39	408	206	369	252	444	109	177	143	24	2,632
120,000 - 139,999	114	35	600	1	63	458	339	244	357	351	134	334	144	23	3,197
140,000 - 159,999	93	56	718	0	48	387	337	117	342	191	122	316	101	14	2,842
160,000 - 179,999	107	64	720	1	22	273	237	66	285	101	103	280	100	13	2,372
180,000 - 199,999	115	94	675	0	13	278	167	48	209	79	64	195	97	6	2,040
200,000 - 249,999	234	242	1,319	1	12	426	225	49	293	69	107	310	115	4	3,406
250,000 - 299,999	270	179	907	5	13	260	101	14	168	37	93	176	85	5	2,313
300,000 - 399,999	441	235	909	11	17	239	48	6	173	38	71	126	128	2	2,444
400,000 - 499,999	335	196	410	5	9	103	27	4	67	10	29	66	68	3	1,332
500,000 - 749,999	495	186	465	19	5	88	39	1	53	8	11	38	87	1	1,496
750,000 - 999,999	210	82	165	4	2	25	14	0	15	1	2	5	33	1	559
1,000,000 and Over	316	93	226	4	0	16	2	0	12	1	1	5	18	0	694
All Price Ranges	2,914	1,587	7,922	56	443	4,108	2,176	2,391	2,673	2,444	1,153	2,187	1,666	194	31,914

2010 All SFR/NC – Total Listings by Price and Area (1/1/10-12/31/10)

	N	NE	NW	XNE	XNW	C	E	S	SE	SW	XSW	XS	W	XW	ALL Areas
29,999 or under	0	0	2	0	0	9	0	78	3	8	3	1	2	1	107
30,000 - 39,999	0	0	0	1	2	36	2	111	6	15	4	1	7	2	187
40,000 - 49,999	0	0	4	0	3	76	3	121	5	37	3	1	29	0	282
50,000 - 59,999	0	0	5	1	6	87	3	155	19	38	4	0	29	2	349
60,000 - 69,999	0	0	10	0	1	108	15	139	34	81	2	2	33	2	427
70,000 - 79,999	1	0	33	0	4	132	27	168	61	133	12	5	29	1	606
80,000 - 89,999	0	0	53	1	7	129	49	223	65	181	8	22	42	5	785
90,000 - 99,999	0	0	93	1	6	178	61	234	69	228	10	47	39	3	969
100,000 - 119,999	4	2	273	1	14	298	151	360	224	384	44	151	106	6	2,018
120,000 - 139,999	6	8	493	0	31	319	266	233	336	279	66	278	120	11	2,446
140,000 - 159,999	5	18	628	0	30	286	289	116	332	158	66	284	97	2	2,311
160,000 - 179,999	6	31	651	0	15	229	228	65	277	88	74	255	99	7	2,025
180,000 - 199,999	20	70	590	0	8	244	161	46	205	75	49	174	90	14	1,746
200,000 - 249,999	83	203	1,151	1	11	385	219	48	287	59	94	292	108	2	2,943
250,000 - 299,999	164	165	823	5	11	240	101	14	166	34	79	170	83	4	2,059
300,000 - 399,999	333	232	870	11	16	222	48	6	171	38	68	124	128	2	2,269
400,000 - 499,999	296	193	405	5	9	95	26	4	67	10	28	65	68	3	1,274
500,000 - 749,999	476	186	463	19	4	80	38	1	53	8	11	38	88	1	1,466
750,000 - 999,999	210	82	163	4	2	25	14	0	15	1	2	4	33	1	556
1,000,000 and Over	316	92	226	4	0	15	2	0	12	1	1	5	17	0	691
ALL Price Ranges	1,920	1,282	6,936	54	180	3,193	1,705	2,122	2,407	1,856	628	1,919	1,248	69	25,519

Please note: The data contained in this report is dynamic in nature and therefore subject to change and adjust with the passage of time. These figures and charts are an approximation of the flow of business as observed through the Tucson Association of REALTORS® Multiple Listing Service. This report does not represent all real estate activity in the area as it does not include unrepresented sales, commercial sales or a substantial portion of new home sales. Though the data and materials presented here are deemed to be substantially correct, neither the Tucson Association of REALTORS® nor the MLS guarantees nor is in any way responsible for its accuracy.

## 2010 All TH/NC – Total Listings by Price and Area (1/1/10-12/31/10)

	N	NE	NW	XNE	XNW	C	E	S	SE	SW	XSW	XS	W	XW	ALL Areas
29,999 or under	1	0	0	0	0	3	2	15	1	2	0	0	0	0	24
30,000 - 39,999	0	0	0	0	0	8	2	19	9	3	3	0	12	0	56
40,000 - 49,999	0	5	1	0	0	9	4	20	17	7	2	0	7	0	72
50,000 - 59,999	0	9	2	0	0	12	8	12	14	14	9	0	11	0	91
60,000 - 69,999	1	2	2	0	0	14	17	25	11	5	19	6	31	0	133
70,000 - 79,999	0	5	6	0	0	21	9	9	17	8	19	9	20	0	123
80,000 - 89,999	1	3	8	0	0	23	23	6	21	5	14	7	41	0	152
90,000 - 99,999	0	3	7	0	0	27	15	3	10	9	11	10	20	0	115
100,000 - 119,999	7	25	32	0	0	52	44	1	5	9	52	16	28	0	271
120,000 - 139,999	18	25	43	0	0	86	64	0	2	15	57	32	22	0	364
140,000 - 159,999	26	38	48	0	0	77	46	0	0	2	44	17	5	0	303
160,000 - 179,999	25	32	40	0	0	28	9	0	0	2	22	23	1	0	182
180,000 - 199,999	12	23	56	0	0	15	6	1	0	1	12	14	5	0	145
200,000 - 249,999	105	39	145	0	0	27	4	0	3	0	12	13	6	0	354
250,000 - 299,999	92	12	75	0	0	14	0	0	1	0	12	4	2	0	212
300,000 - 399,999	106	3	29	0	0	9	0	0	1	0	2	1	0	0	151
400,000 - 499,999	39	1	4	0	0	3	0	0	0	0	0	1	0	0	48
500,000 - 749,999	20	1	2	0	0	7	0	0	0	0	0	0	0	0	30
750,000 - 999,999	1	0	2	0	0	0	0	0	0	0	0	1	0	0	4
1,000,000 and Over	0	1	0	0	0	0	0	0	0	0	0	0	0	0	1
ALL Price Ranges	454	227	502	0	0	435	253	111	112	82	290	154	212	0	2,832

## 2010 All CND/NC – Total Listings by Price and Area (1/1/10-12/31/10)

	N	NE	NW	XNE	XNW	C	E	S	SE	SW	XSW	XS	W	XW	ALL Areas
29,999 or under	0	14	6	0	0	25	22	0	0	2	0	0	14	0	83
30,000 - 39,999	0	9	10	0	0	15	23	1	1	3	3	0	20	0	85
40,000 - 49,999	1	6	9	0	0	42	24	0	0	6	10	2	10	0	110
50,000 - 59,999	4	14	8	0	0	26	25	1	0	0	12	2	26	0	118
60,000 - 69,999	22	5	4	0	0	36	40	0	0	0	11	3	13	0	134
70,000 - 79,999	14	6	2	0	0	31	27	0	1	0	3	0	17	0	101
80,000 - 89,999	31	10	2	0	0	41	22	0	1	0	1	0	28	0	136
90,000 - 99,999	35	4	7	0	0	34	8	0	0	1	0	0	24	0	113
100,000 - 119,999	64	2	20	0	0	56	9	0	0	0	1	0	4	0	156
120,000 - 139,999	90	2	23	0	0	51	9	0	0	0	0	4	2	0	181
140,000 - 159,999	62	0	12	0	0	23	0	0	0	0	0	4	0	0	101
160,000 - 179,999	76	0	12	0	0	16	1	0	0	0	0	0	0	0	105
180,000 - 199,999	70	1	20	0	0	18	0	0	0	0	0	0	0	0	109
200,000 - 249,999	61	0	12	0	0	15	0	0	0	0	0	0	0	0	88
250,000 - 299,999	15	0	4	0	0	3	0	0	0	0	0	0	0	0	22
300,000 - 399,999	2	0	6	0	0	7	0	0	0	0	0	0	0	0	15
400,000 - 499,999	0	0	0	0	0	3	0	0	0	0	1	0	0	0	4
500,000 - 749,999	0	0	0	0	0	1	0	0	0	0	0	0	0	0	1
750,000 - 999,999	0	0	0	0	0	0	0	0	0	0	0	0	0	0	0
1,000,000 and Over	0	0	0	0	0	1	0	0	0	0	0	0	0	0	1
ALL Price Ranges	547	73	157	0	0	444	210	2	3	12	43	15	158	0	1,664

Please note: The data contained in this report is dynamic in nature and therefore subject to change and adjust with the passage of time. These figures and charts are an approximation of the flow of business as observed through the Tucson Association of REALTORS® Multiple Listing Service. This report does not represent all real estate activity in the area as it does not include unrepresented sales, commercial sales or a substantial portion of new home sales. Though the data and materials presented here are deemed to be substantially correct, neither the Tucson Association of REALTORS® nor the MLS guarantees nor is in any way responsible for its accuracy.

## 2010 All MSFR – Total Listings by Price and Area (1/1/10-12/31/10)

	N	NE	NW	XNE	XNW	C	E	S	SE	SW	XSW	XS	W	XW	ALL Areas
29,999 or under	0	0	0	0	3	1	0	6	0	6	10	2	0	6	34
30,000 - 39,999	0	0	16	0	21	2	0	19	5	21	19	3	6	13	125
40,000 - 49,999	0	0	11	1	24	3	0	31	10	26	10	3	4	12	135
50,000 - 59,999	0	0	14	0	25	2	0	14	6	35	20	3	11	9	139
60,000 - 69,999	0	0	24	0	19	3	0	15	17	39	15	8	2	2	144
70,000 - 79,999	0	0	23	0	26	2	0	22	9	23	18	6	6	11	146
80,000 - 89,999	0	0	15	0	18	4	0	6	15	32	14	15	6	10	135
90,000 - 99,999	0	0	25	0	21	5	0	9	17	22	20	5	4	14	142
100,000 - 119,999	0	0	32	0	25	3	2	8	23	38	10	10	4	18	173
120,000 - 139,999	0	0	40	1	30	0	0	11	18	45	11	19	3	12	190
140,000 - 159,999	0	0	26	0	18	0	1	1	11	28	13	13	2	13	126
160,000 - 179,999	0	0	15	0	7	0	0	1	6	9	4	2	0	4	48
180,000 - 199,999	0	0	7	0	4	0	0	1	5	2	3	6	2	2	32
200,000 - 249,999	0	0	9	0	1	0	2	1	3	9	1	5	1	2	34
250,000 - 299,999	0	0	4	0	2	0	0	0	0	3	1	1	0	1	12
300,000 - 399,999	0	0	3	0	1	0	0	0	0	0	1	0	0	0	5
400,000 - 499,999	0	0	0	0	0	1	1	0	0	0	0	0	0	0	2
500,000 - 749,999	0	0	0	0	1	0	1	0	0	0	0	0	0	0	2
750,000 - 999,999	0	0	0	0	0	0	0	0	0	0	0	0	0	0	0
1,000,000 and Over	0	0	0	0	0	0	0	0	0	0	0	0	0	0	0
ALL Price Ranges	0	0	265	2	246	26	7	145	145	338	170	96	51	129	1,624

## 2010 All MH – Total Listings by Price and Area (1/1/10-12/31/10)

	N	NE	NW	XNE	XNW	C	E	S	SE	SW	XSW	XS	W	XW	ALL Areas
29,999 or under	0	0	0	0	1	2	0	3	0	2	0	0	0	0	8
30,000 - 39,999	0	0	3	0	2	1	0	1	0	6	0	0	0	1	14
40,000 - 49,999	0	0	6	0	1	0	0	2	0	19	2	1	5	1	37
50,000 - 59,999	0	0	6	0	5	0	0	1	1	29	3	0	2	0	47
60,000 - 69,999	0	0	8	0	0	0	0	1	0	29	3	0	2	4	48
70,000 - 79,999	0	0	9	0	3	0	0	0	0	15	3	0	0	0	30
80,000 - 89,999	0	0	1	0	1	0	0	0	0	16	4	0	1	0	23
90,000 - 99,999	0	0	5	0	1	0	0	1	0	8	2	0	0	0	17
100,000 - 119,999	0	0	2	0	0	0	0	1	0	13	1	0	1	0	18
120,000 - 139,999	0	0	1	0	1	0	0	0	0	10	1	1	0	0	14
140,000 - 159,999	0	0	2	0	0	0	0	0	0	3	0	1	0	0	6
160,000 - 179,999	0	0	2	0	0	0	0	0	1	1	1	0	0	0	5
180,000 - 199,999	0	0	1	0	1	0	0	0	0	1	0	0	0	0	3
200,000 - 249,999	0	0	1	0	0	0	0	0	0	1	0	0	0	0	2
250,000 - 299,999	0	0	1	0	0	0	0	0	0	0	0	1	0	0	2
300,000 - 399,999	0	0	1	0	0	0	0	0	0	0	0	1	0	0	2
400,000 - 499,999	0	0	0	0	0	0	0	0	0	0	0	0	0	0	0
500,000 - 749,999	0	0	0	0	0	0	0	0	0	0	0	0	0	0	0
750,000 - 999,999	0	0	0	0	0	0	0	0	0	0	0	0	0	0	0
1,000,000 and Over	0	0	0	0	0	0	0	0	0	0	0	0	0	0	0
ALL Price Ranges	0	0	51	0	16	3	0	10	2	153	20	5	14	4	275

Please note: The data contained in this report is dynamic in nature and therefore subject to change and adjust with the passage of time. These figures and charts are an approximation of the flow of business as observed through the Tucson Association of REALTORS® Multiple Listing Service. This report does not represent all real estate activity in the area as it does not include unrepresented sales, commercial sales or a substantial portion of new home sales. Though the data and materials presented here are deemed to be substantially correct, neither the Tucson Association of REALTORS® nor the MLS guarantees nor is in any way responsible for its accuracy.

2010 All RESIDENTIAL – Expired Listings

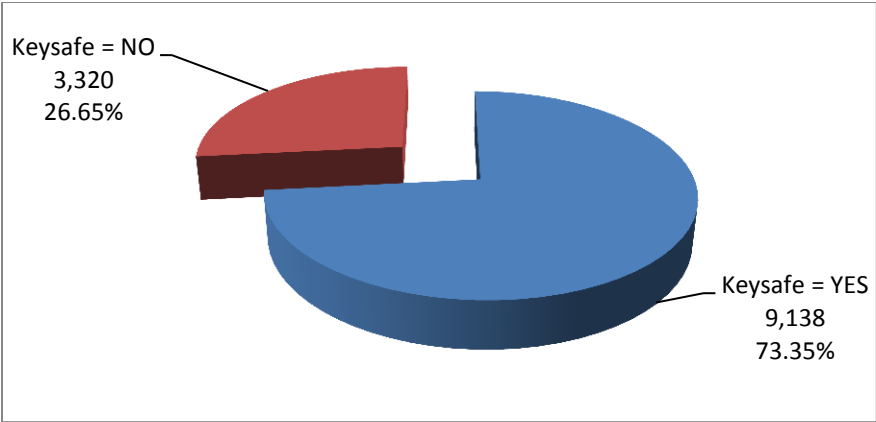
	N	NE	NW	XNE	XNW	C	E	S	SE	SW	XSW	XS	W	XW	ALL Areas
29,999 or under	0	4	1	0	0	7	3	3	0	1	0	0	0	2	21
30,000 - 39,999	0	5	2	0	2	6	9	11	4	2	3	0	4	1	49
40,000 - 49,999	0	1	3	0	1	13	6	17	2	10	2	1	3	2	61
50,000 - 59,999	0	3	4	0	4	18	6	20	3	15	14	1	10	1	99
60,000 - 69,999	8	2	7	0	4	16	15	19	3	16	14	2	4	1	111
70,000 - 79,999	4	2	13	0	9	30	10	17	7	24	7	4	7	2	136
80,000 - 89,999	15	6	9	0	4	24	18	24	9	21	11	4	18	3	166
90,000 - 99,999	7	2	19	0	6	42	8	28	18	33	11	9	8	2	193
100,000 - 119,999	17	2	43	0	8	70	22	41	29	55	18	22	16	6	349
120,000 - 139,999	16	7	64	0	7	85	34	20	42	49	25	46	27	7	429
140,000 - 159,999	16	8	63	0	12	61	47	17	44	22	36	42	19	4	391
160,000 - 179,999	29	6	90	0	7	47	42	6	38	11	28	43	18	1	366
180,000 - 199,999	20	12	98	0	4	55	28	2	32	16	17	37	18	2	341
200,000 - 249,999	39	38	179	0	2	92	41	8	40	15	16	61	18	2	551
250,000 - 299,999	46	34	156	3	2	44	22	1	33	11	25	29	20	1	427
300,000 - 399,999	58	35	163	0	1	32	7	1	29	6	17	34	25	1	409
400,000 - 499,999	65	40	62	3	2	23	4	1	12	6	10	15	8	0	251
500,000 - 749,999	101	37	110	7	0	21	4	0	19	1	5	9	31	0	345
750,000 - 999,999	45	18	31	3	2	6	3	0	5	1	0	0	6	0	120
1,000,000 and Over	66	24	54	3	0	8	1	0	2	1	0	2	4	0	165
ALL Price Ranges	552	286	1,171	19	77	700	330	236	371	316	259	361	264	38	4,980

2010 All RESIDENTIAL – Cancelled Listings

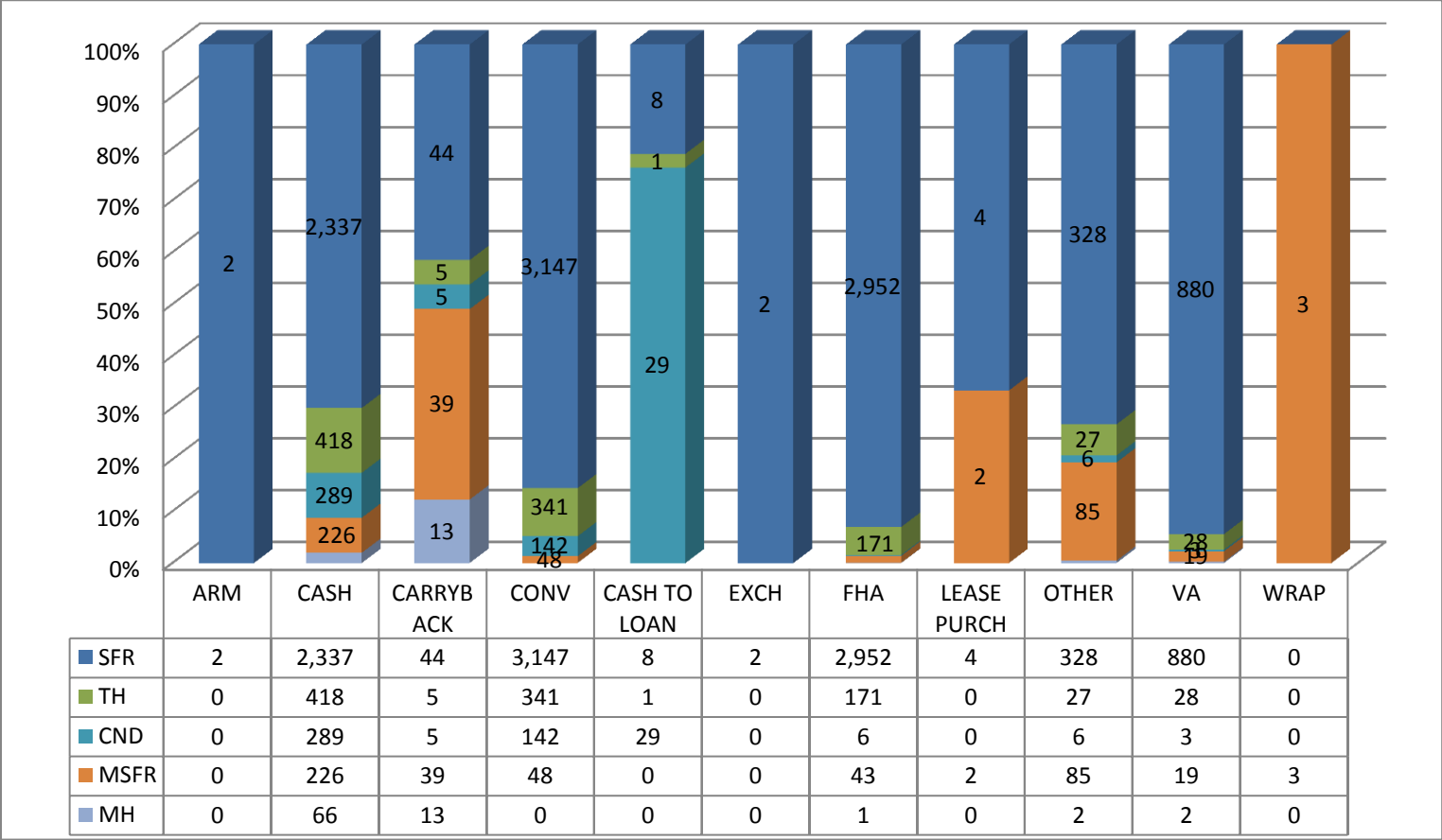
	N	NE	NW	XNE	XNW	C	E	S	SE	SW	XSW	XS	W	XW	ALL Areas
29,999 or under	1	2	5	0	0	4	5	7	0	2	3	1	4	0	34
30,000 - 39,999	0	3	1	1	3	8	5	17	2	5	4	0	4	4	57
40,000 - 49,999	0	3	6	0	2	19	3	31	4	10	5	0	11	1	95
50,000 - 59,999	0	2	5	0	6	17	10	32	5	15	6	0	17	1	116
60,000 - 69,999	1	1	5	0	4	19	15	32	9	21	8	3	13	1	132
70,000 - 79,999	1	2	8	0	7	30	6	42	14	31	9	3	13	2	168
80,000 - 89,999	3	1	6	0	2	46	13	45	12	37	3	6	38	3	215
90,000 - 99,999	11	2	22	0	7	38	16	46	15	41	9	11	21	5	244
100,000 - 119,999	10	4	50	0	8	84	37	58	32	70	12	23	31	6	425
120,000 - 139,999	25	2	94	0	16	108	70	47	74	58	17	62	36	5	614
140,000 - 159,999	15	11	118	0	12	96	67	18	65	50	18	61	15	2	548
160,000 - 179,999	20	7	138	0	3	71	34	15	47	21	15	48	22	4	445
180,000 - 199,999	27	12	145	0	3	60	39	14	42	18	7	29	20	3	419
200,000 - 249,999	41	41	242	0	3	93	54	8	59	14	19	43	21	1	639
250,000 - 299,999	55	32	165	1	3	80	22	2	30	6	9	40	17	1	463
300,000 - 399,999	80	53	214	3	8	71	15	1	38	7	10	17	25	0	542
400,000 - 499,999	79	46	87	0	4	30	5	0	17	0	5	8	22	0	303
500,000 - 749,999	106	62	113	2	1	19	13	0	16	2	0	12	18	0	364
750,000 - 999,999	53	30	42	1	0	12	6	0	7	0	0	1	11	0	163
1,000,000 and Over	106	41	69	0	0	7	0	0	2	0	1	0	5	0	231
ALL Price Ranges	634	357	1,535	8	92	912	435	415	490	408	160	368	364	39	6,217

Please note: The data contained in this report is dynamic in nature and therefore subject to change and adjust with the passage of time. These figures and charts are an approximation of the flow of business as observed through the Tucson Association of REALTORS® Multiple Listing Service. This report does not represent all real estate activity in the area as it does not include unrepresented sales, commercial sales or a substantial portion of new home sales. Though the data and materials presented here are deemed to be substantially correct, neither the Tucson Association of REALTORS® nor the MLS guarantees nor is in any way responsible for its accuracy.

## 2010 Sold Properties Keysafe Analysis – All Residential



## 2010 All Residential Terms of Sale by Terms and Type



Please note: The data contained in this report is dynamic in nature and therefore subject to change and adjust with the passage of time. These figures and charts are an approximation of the flow of business as observed through the Tucson Association of REALTORS® Multiple Listing Service. This report does not represent all real estate activity in the area as it does not include unrepresented sales, commercial sales or a substantial portion of new home sales. Though the data and materials presented here are deemed to be substantially correct, neither the Tucson Association of REALTORS® nor the MLS guarantees nor is in any way responsible for its accuracy.